








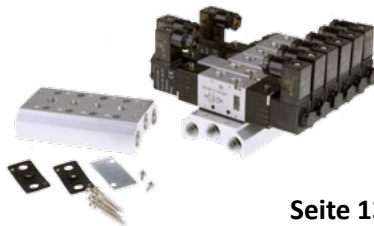





airtec

basic line



Air. Pressure. Motion.

 Seite 4	Manually operated valves 84-HPV, G1/8 and G1/4 5/2-way	 Seite 5
 Seite 6	Manually operated valves 84-4F, G1/4 5/2-way	 Seite 7
 Seite 8	Electrically operated valves 86-MV-5-28, G1/8 5/2- and 5/3-way	 Seite 9
 Seite 10	Electrically operated valves 86-MV-5-24, G1/4 5/2- and 5/3-way	 Seite 11
 Seite 12	Electrically operated valves 86-MV-5-12, G1/2 5/2- and 5/3-way	 Seite 13
 Seite 14	Electrically operated valves 86-MV-3-18, G1/8 3/2-way	 Seite 15
 Seite 16	Electrically operated valves for sub base mounting 86-MN-4-18, G1/8 5/2-way	 Seite 17
Electrically operated valves, according to Namur 86-MN-4-14, G1/4 5/2-way		



Seite 18

**Accessories, according to Namur
for 86-MN-4-14**

Electrically operated valves for sub
base mounting
**86-MN-4-12, G1/2
5/2-way**



Seite 19



Seite 20

**Electrically operated valves
86-MS-3V, G1/8
3/2-way**

**Al-profile cylinders ISO 15552
88-XSI
ø 32 to 125 mm**

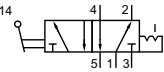


Seite 21

Mechanically operated valves

Toggle lever valve 84-HPV

Types



84-HPV-18-520
5/2-way, with detent function, G1/8

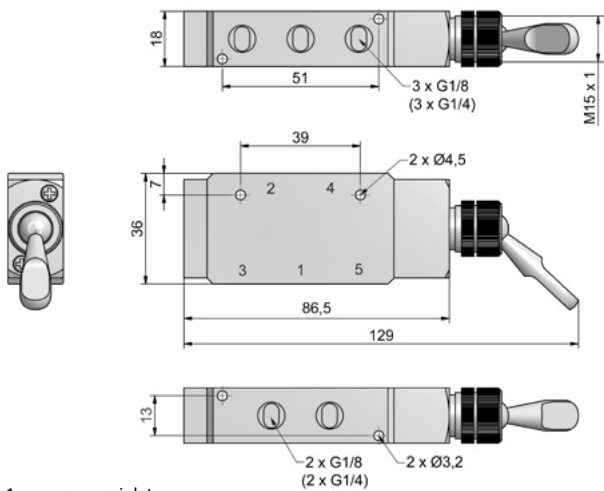
84-HPV-14-520
5/2-way, with detent function, G1/4



Design, function and technical data

Manually operated spool valve with toggle lever and detent function.

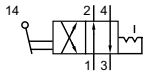
84-HPV-18-520, 84-HPV-14-520



1 = pressure inlet
2,4 = outlets
3,5 = exhausts

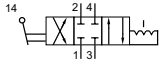
Model-no.	84-HPV-18-520	84-HPV-14-520
Connection	G1/8	G1/4
Nominal size	4 mm	5 mm
Flow rate	750 NI/min (0,762 Cv)	980 NI/min (0,996 Cv)
Pressure range	0 ... 8 bar (0 ... 116 psi)	
Temperature range	-10°C ... +70°C (+14°F ... +158°F)	
Materials	body: Al (anodized), steel (zinc-plated), plastic, seals: NBR, inner parts: Al, steel and plastic	
Medium	compressed air in accordance with ISO 8573-1:2010, class 7:2:4 - and free of aggressive additives	
Degree of protection	IP 65 according to EN 60529	
Weight	0,170 kg (0,375 lb.)	0,160 kg (0,353 lb.)

Types



84-4HV-18-520-S
4/2-way, with detent function, G1/8, with nut

84-4HV-14-520-S
4/2-way, with detent function, G1/4, with nut



84-4HV-18-530-S
4/3-way, center position closed, G1/8, with nut

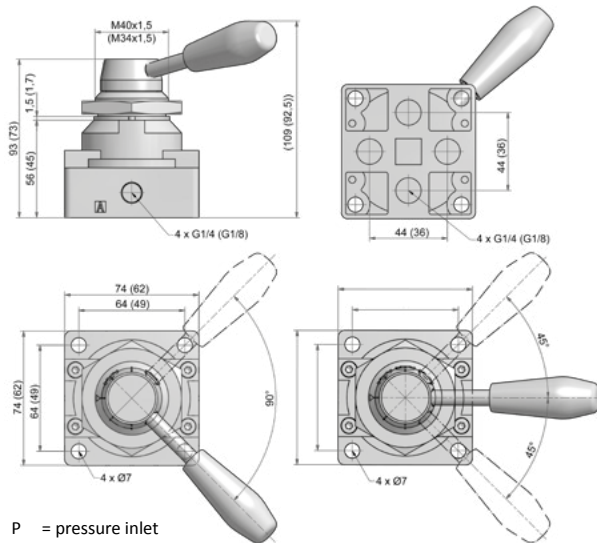
84-4HV-14-530-S
4/3-way, center position closed, G1/4, with nut



Design, function and technical data

Manually operated valve with rotating lever.
Available as detent version and as 4/3-way valve detent, center ports closed.

84-4HV-14(18)-520-S, 84-4HV-14(18)-530-S



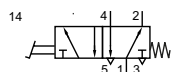
P = pressure inlet
A,B = outlets
R = exhaust

Model-no.	84-4HV-18-520-S	84-4HV-14-520-S	84-4HV-18-530-S	84-4HV-14-530-S
Connection	G1/8	G1/4	G1/8	G1/4
Nominal size	5 mm			
Flow rate	980 NI/min (0,996 Cv)			
Pressure range	0 ... 8 bar (0 ... 116 psi)			
Temperature range	-10°C ... +70°C (+14°F ... +158°F)			
Materials	body: aluminium-die-cast (varnished), seals: NBR, ceramic (only 84-4HV-18), inner parts: Al, steel			
Medium	compressed air in accordance with ISO 8573-1:2010, class 7:2:4 - and free of aggressive additives			
Degree of protection	IP 65 according to EN 60529			
Weight	0,390 kg (0,860 lb.)	0,683 kg (1,506 lbs.)	0,392 kg (0,864 lb.)	0,672 kg (1,481 lbs.)

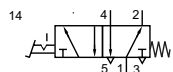
Mechanically operated valves

Foot-pedal valve 84-4F

Types



84-4FF-511-14-H
5/2-way, single operated, mechanical spring, G1/4



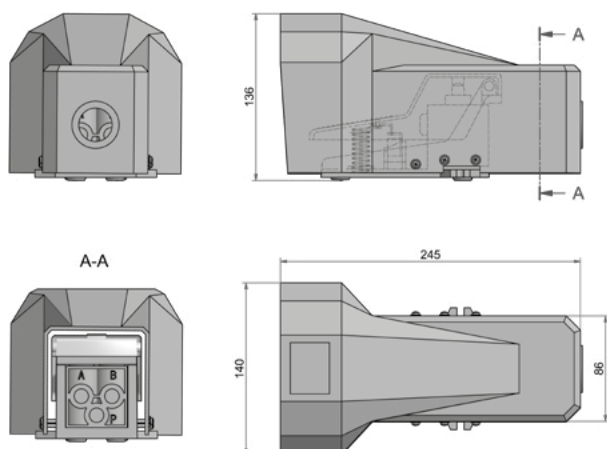
84-4FR-520-14-H
5/2-way, double operated, G1/4



Design, function and technical data

Manually operated spool valve foot-operated. By closing port A or B the valve can be used as well as 3/2-way valve. Silencers, provided at the exhaust ports are included. A plastic cover is part of delivery.

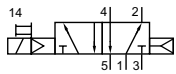
84-4FF-511-14-H, 84-4FR-520-14-H



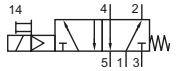
P = pressure inlet
A,B = outlets

Model-no.	84-4FF-511-14-H	84-4FR-520-14-H
Connection	G 1/4	
Nominal size	9 mm	
Flow rate	530 NI/min (0,539 Cv)	
Pressure range	0 ... 8 bar (0 ... 116 psi)	
Temperature range	-10°C ... +70°C (+14°F ... +158°F)	
Materials	body: Al (anodized), steel (zinc-plated), plastic, seals: NBR, inner parts: Al, steel and plastic	
Medium	compressed air in accordance with ISO 8573-1:2010, class 7:2:4 - and free of aggressive additives	
Degree of protection	IP 65 according to EN 60529	
Weight	0,900 kg (1,984 lbs.)	0,900 kg (1,984 lbs.)

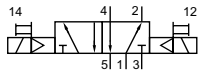
Types



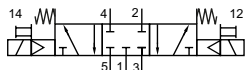
86-MV-5-18-510-xxx
5/2-way, single solenoid, air spring return, G1/8



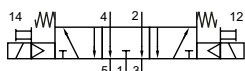
86-MV-5-18-511-xxx
5/2-way, single solenoid, mechanical spring, G1/8



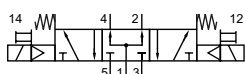
86-MV-5-18-520-xxx
5/2-way, double solenoid, G1/8



86-MV-5-18-530-xxx
5/3-way, center position closed, G1/8



86-MV-5-18-533-xxx
5/3-way, center position exhausted, G1/8



86-MV-5-18-534-xxx
5/3-way, center position pressurized, G1/8



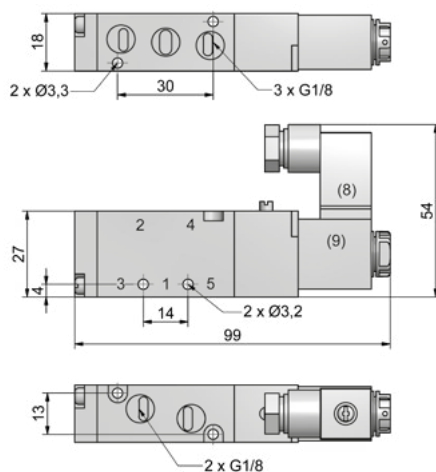
Please complete: xxx = voltage

M42= 24V DC, 2,5 W, with plug socket with LED
M57= 230V AC, 2,5 VA, with plug socket with LED*

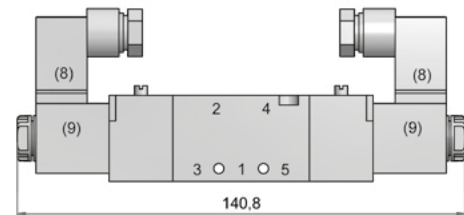
Design, function and technical data

Electrically operated spool valve. The manual override is non-detent/ detent and is operated by hand or screw driver.

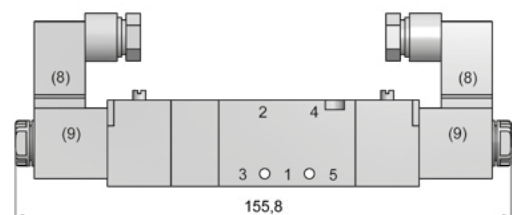
86-MV-5-18-510, 86-MV-5-18-511



86-MV-5-18-520



86-MV-5-18-530, 86-MV-5-18-533, 86-MV-5-18-534



1 = pressure inlet (8) = plug socket can be repositioned by 180°
2,4 = outlets (9) = solenoid coil can be repositioned by 4 x 90°
3,5 = exhausts

Model-no.	86-MV-5-18-510*	86-MV-5-18-511	86-MV-5-18-520	86-MV-5-18-530	86-MV-5-18-533	86-MV-5-18-534*
Connection	G1/8					
Nominal size	4 mm			3,5 mm		
Flow rate	650 NI/min (0,660 Cv)			480 NI/min (0,488 Cv)		
Pressure range	1,5 ... 8 bar (22 ... 116 psi)					
Response time at 6 bar	20 ms					
Temperature range	-10°C ... +70°C (+14°F ... +158°F)					
Materials	body: Al (anodized), steel (zinc-plated), plastic, seals: NBR, inner parts: Al, steel and plastic					
Medium	compressed air in accordance with ISO 8573-1:2010, class 7:2:4 - and free of aggressive additives					
Degree of protection	IP 65 according to EN 60529					
Weight	0,115 kg (0,254 lb.)		0,170 kg (0,375 lb.)	0,190 kg (0,419 lb.)		

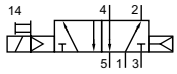
* This models on request.

Electrically operated valves

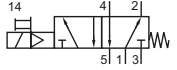
Series 86-MV-5-28



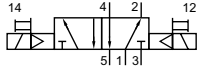
Types



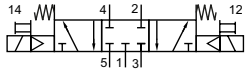
86-MV-5-28-510-xxx
5/2-way, single solenoid, air spring return, G1/8



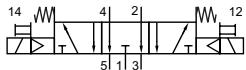
86-MV-5-28-511-xxx
5/2-way, single solenoid, mechanical spring, G1/8



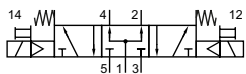
86-MV-5-28-520-xxx
5/2-way, double solenoid, G1/8



86-MV-5-28-530-xxx
5/3-way, center position closed, G1/8



86-MV-5-28-533-xxx
5/3-way, center position exhausted, G1/8



86-MV-5-28-534-xxx
5/3-way, center position pressurized, G1/8



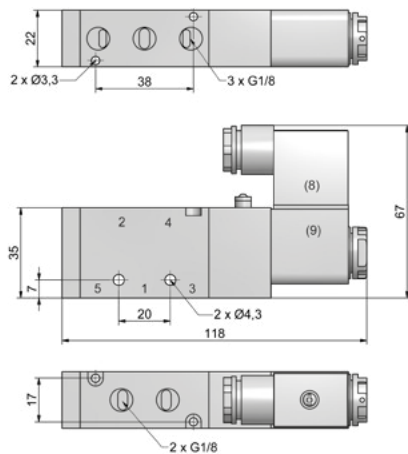
Please complete: xxx = voltage

M42 = 24V DC, 3 W, with plug socket with LED
M57 = 230V AC, 3,5 VA, with plug socket with LED*
457 = 230VAC, 7/4 VA, without plug socket*2

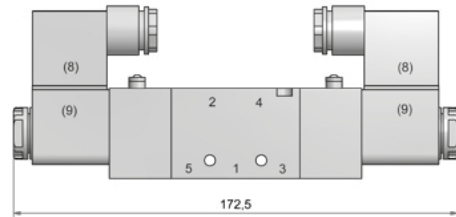
Design, function and technical data

Electrically operated spool valve. The manual override is non-detent/ detent and is operated by hand or screw driver.

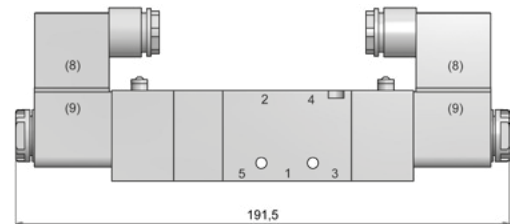
86-MV-5-28-510, 86-MV-5-28-511



86-MV-5-28-520



86-MV-5-28-530, 86-MV-5-28-533, 86-MV-5-28-534



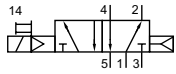
1 = pressure inlet (8) = plug socket can be repositioned by 180°
2,4 = outlets (9) = solenoid coil can be repositioned by 4 x 90°
3,5 = exhausts

Model-no.	86-MV-5-28-510*	86-MV-5-28-511	86-MV-5-28-520	86-MV-5-28-530	86-MV-5-28-533	86-MV-5-28-534*
Connection	G1/8					
Nominal size	4,5 mm			4 mm		
Flow rate	750 NI/min (0,762 Cv)			650 NI/min (0,660 Cv)		
Pressure range	1,5 ... 8 bar (22 ... 116 psi)					
Response time at 6 bar	20 ms					
Temperature range	-10°C ... +70°C (+14°F ... +158°F)					
Materials	body: Al (anodized), steel (zinc-plated), plastic, seals: NBR, inner parts: Al, steel and plastic					
Medium	compressed air in accordance with ISO 8573-1:2010, class 7:2:4 - and free of aggressive additives					
Degree of protection	IP 65 according to EN 60529					
Weight	0,212 kg (0,467 lb.)		0,320 kg (0,705 lb.)	0,363 kg (0,800 lb.)		

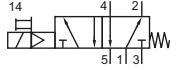
* This models on request.

*2 Suitable plug sockets see AIRTEC Pneumatics Catalogue.

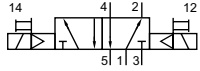
Types



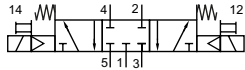
86-MV-5-14-510-xxx
5/2-way, single solenoid, air spring return, G1/4



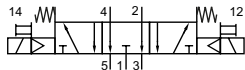
86-MV-5-14-511-xxx
5/2-way, single solenoid, mechanical spring, G1/4



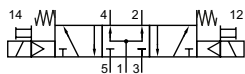
86-MV-5-14-520-xxx
5/2-way, double solenoid, G1/4



86-MV-5-14-530-xxx
5/3-way, center position closed, G1/4



86-MV-5-14-533-xxx
5/3-way, center position exhausted, G1/4



86-MV-5-14-534-xxx
5/3-way, center position pressurized, G1/4



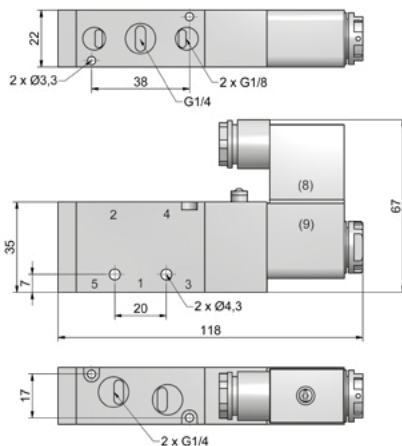
Please complete: xxx = voltage

M42 = 24V DC, 3 W, with plug socket with LED
M57 = 230V AC, 3,5 VA, with plug socket with LED*
457 = 230VAC, 7/4 VA, without plug socket*²

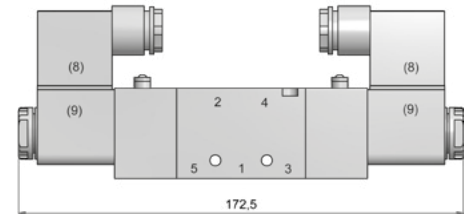
Design, function and technical data

Electrically operated spool valve. The manual override is non-detent/ detent and is operated by hand or screw driver.

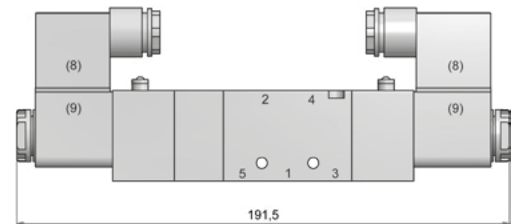
86-MV-5-14-510, 86-MV-5-14-511



86-MV-5-14-520



86-MV-5-14-530, 86-MV-5-14-533, 86-MV-5-14-534



1 = pressure inlet
2,4 = outlets
3,5 = exhausts
(8) = plug socket can be repositioned by 180°
(9) = solenoid coil can be repositioned by 4 x 90°

Model-no.	86-MV-5-14-510*	86-MV-5-14-511	86-MV-5-14-520	86-MV-5-14-530	86-MV-5-14-533	86-MV-5-14-534*
Connection	pressure inlet and outlets G1/4, exhausts G1/8					
Nominal size	4,5 mm			4 mm		
Flow rate	870 NI/min (0,884 Cv)			650 NI/min (0,660 Cv)		
Pressure range	1,5 ... 8 bar (22 ... 116 psi)					
Response time at 6 bar	20 ms					
Temperature range	-10°C ... +70°C (+14°F ... +158°F)					
Materials	body: Al (anodized), steel (zinc-plated), plastic, seals: NBR, inner parts: Al, steel and plastic					
Medium	compressed air in accordance with ISO 8573-1:2010, class 7:2:4 - and free of aggressive additives					
Degree of protection	IP 65 according to EN 60529					
Weight	0,208 kg (0,459 lb.)		0,318 kg (0,701 lb.)	0,358 kg (0,789 lb.)		

* This models on request.

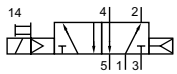
*² Suitable plug sockets see AIRTEC Pneumatics Catalogue.

Electrically operated valves

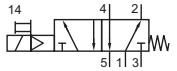
Series 86-MV-5-24



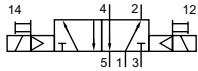
Types



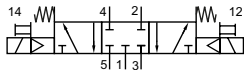
86-MV-5-24-510-xxx
5/2-way, single solenoid, air spring return, G1/4



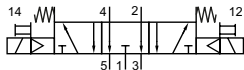
86-MV-5-24-511-xxx
5/2-way, single solenoid, mechanical spring, G1/4



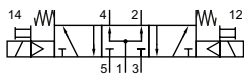
86-MV-5-24-520-xxx
5/2-way, double solenoid, G1/4



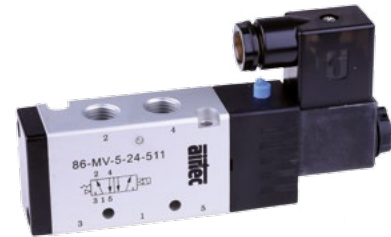
86-MV-5-24-530-xxx
5/3-way, center position closed, G1/4



86-MV-5-24-533-xxx
5/3-way, center position exhausted, G1/4



86-MV-5-24-534-xxx
5/3-way, center position pressurized, G1/4



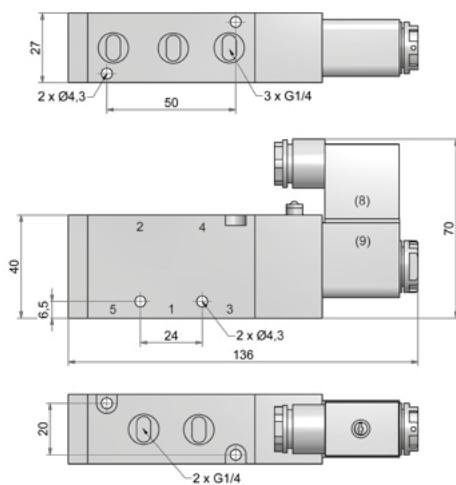
Please complete: xxx = voltage

M42 = 24V DC, 3 W, with plug socket with LED
M57 = 230V AC, 3,5 VA, with plug socket with LED*
457 = 230VAC, 7/4 VA, without plug socket*2

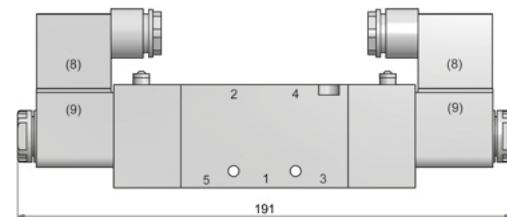
Design, function and technical data

Electrically operated spool valve. The manual override is non-detent/ detent and is operated by hand or screw driver.

86-MV-5-24-510, 86-MV-5-24-511



86-MV-5-24-520



86-MV-5-24-530, 86-MV-5-24-533, 86-MV-5-24-534



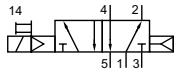
1 = pressure inlet (8) = plug socket can be repositioned by 180°
2,4 = outlets (9) = solenoid coil can be repositioned by 4 x 90°
3,5 = exhausts

Model-no.	86-MV-5-24-510*	86-MV-5-24-511	86-MV-5-24-520	86-MV-5-24-530	86-MV-5-24-533	86-MV-5-24-534*
Connection	G1/4					
Nominal size	6 mm			5 mm		
Flow rate	1350 NI/min (1,372 Cv)			980 NI/min (0,996 Cv)		
Pressure range	1,5 ... 8 bar (22 ... 116 psi)					
Response time at 6 bar	20 ms					
Temperature range	-10°C ... +70°C (+14°F ... +158°F)					
Materials	body: Al (anodized), steel (zinc-plated), plastic, seals: NBR, inner parts: Al, steel and plastic					
Medium	compressed air in accordance with ISO 8573-1:2010, class 7:2:4 - and free of aggressive additives					
Degree of protection	IP 65 according to EN 60529					
Weight	0,290 kg (0,639 lb.)		0,400 kg (0,882 lb.)	0,460 kg (1,014 lbs.)		

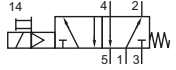
* This models on request.

*2 Suitable plug sockets see AIRTEC Pneumatics Catalogue.

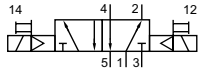
Types



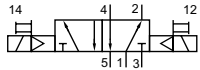
86-MV-5-38-510-xxx
5/2-way, single solenoid, air spring return, G1/4



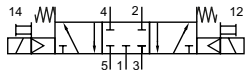
86-MV-5-38-511-xxx
5/2-way, single solenoid, mechanical spring, G1/4



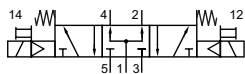
86-MV-5-38-520-xxx
5/2-way, double solenoid, G1/4



86-MV-5-38-530-xxx
5/3-way, center position closed, G1/4



86-MV-5-38-533-xxx
5/3-way, center position exhausted, G1/4



86-MV-5-38-534-xxx
5/3-way, center position pressurized, G1/4



Please complete: xxx = voltage

M42 = 24V DC, 3 W, with plug socket with LED

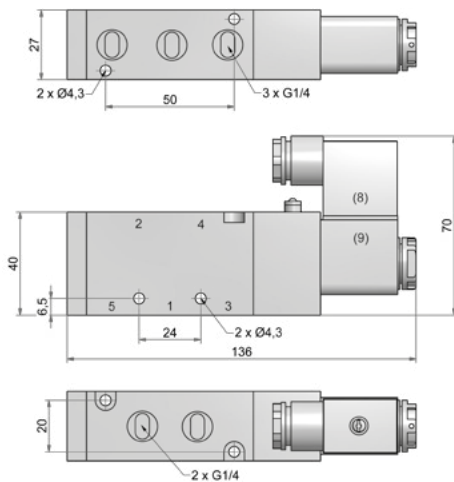
M57 = 230V AC, 3,5 VA, with plug socket with LED*

457 = 230VAC, 7/4 VA, without plug socket*²

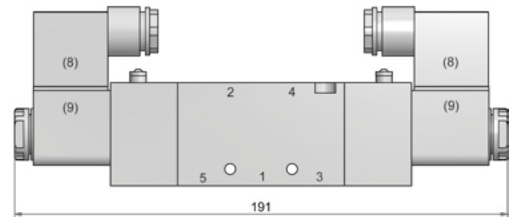
Design, function and technical data

Electrically operated spool valve. The manual override is non-detent/ detent and is operated by hand or screw driver.

86-MV-5-38-510, 86-MV-5-38-511



86-MV-5-38-520



86-MV-5-38-530, 86-MV-5-38-533, 86-MV-5-38-534



1 = pressure inlet
2,4 = outlets
3,5 = exhausts

(8) = plug socket can be repositioned by 180°
(9) = solenoid coil can be repositioned by 4 x 90°

Model-no.	86-MV-5-38-510*	86-MV-5-38-511	86-MV-5-38-520	86-MV-5-38-530	86-MV-5-38-533	86-MV-5-38-534*
Connection	pressure inlet and outlets G3/8, exhausts G1/4					
Nominal size	6,5 mm			5 mm		
Flow rate	1600 NI/min (1,626 Cv) (1,626 Cv)			980 NI/min (0,996 Cv)		
Pressure range	1,5 ... 8 bar (22 ... 116 psi)					
Response time at 6 bar	20 ms					
Temperature range	-10°C ... +70°C (+14°F ... +158°F)					
Materials	body: Al (anodized), steel (zinc-plated), plastic, seals: NBR, inner parts: Al, steel and plastic					
Medium	compressed air in accordance with ISO 8573-1:2010, class 7:2:4 - and free of aggressive additives					
Degree of protection	IP 65 according to EN 60529					
Weight	0,285 kg (0,628 lb.)		0,395 kg (0,871 lb.)	0,454 kg (1,001 lbs.)		

* This models on request.

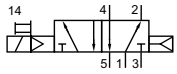
*² Suitable plug sockets see AIRTEC Pneumatics Catalogue.

Electrically operated valves

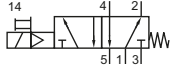
Series 86-MV-5-12



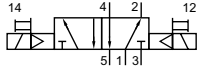
Types



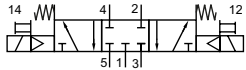
86-MV-5-12-510-xxx
5/2-way, single solenoid, air spring return, G1/4



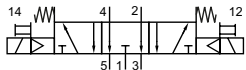
86-MV-5-12-511-xxx
5/2-way, single solenoid, mechanical spring, G1/4



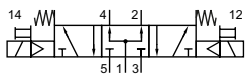
86-MV-5-12-520-xxx
5/2-way, double solenoid, G1/4



86-MV-5-12-530-xxx
5/3-way, center position closed, G1/4



86-MV-5-12-533-xxx
5/3-way, center position exhausted, G1/4



86-MV-5-12-534-xxx
5/3-way, center position pressurized, G1/4



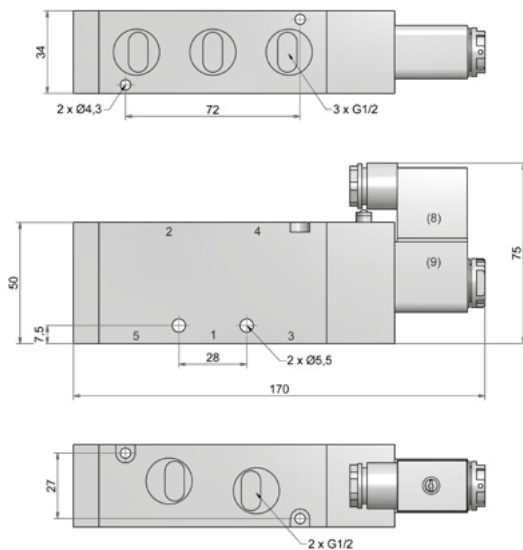
Please complete: xxx = voltage

M42 = 24V DC, 3 W, with plug socket with LED
M57 = 230V AC, 3,5 VA, with plug socket with LED*
457 = 230VAC, 7/4 VA, without plug socket*2

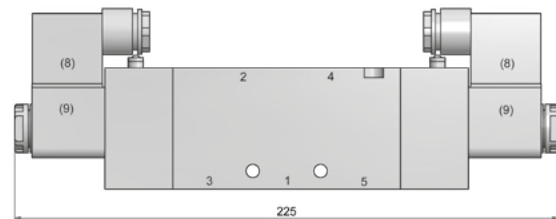
Design, function and technical data

Electrically operated spool valve. The manual override is non-detent/ detent and is operated by hand or screw driver.

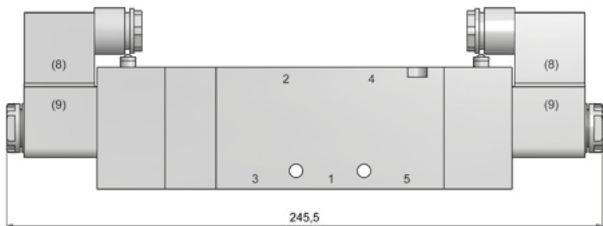
86-MV-5-12-510, 86-MV-5-12-511



86-MV-5-12-520



86-MV-5-12-530, 86-MV-5-12-533, 86-MV-5-12-534



1 = pressure inlet (8) = plug socket can be repositioned by 180°
2,4 = outlets (9) = solenoid coil can be repositioned by 4 x 90°
3,5 = exhausts

Model-no.	86-MV-5-12-510*	86-MV-5-12-511	86-MV-5-12-520	86-MV-5-12-530	86-MV-5-12-533	86-MV-5-12-534*
Connection	G1/2					
Nominal size	8 mm			6,5 mm		
Flow rate	2500 NI/min (2,541 Cv)			1600 NI/min (1,626 Cv)		
Pressure range	1,5 ... 8 bar (22 ... 116 psi)					
Response time at 6 bar	20 ms					
Temperature range	-10°C ... +70°C (+14°F ... +158°F)					
Materials	body: Al (anodized), steel (zinc-plated), plastic, seals: NBR, inner parts: Al, steel and plastic					
Medium	compressed air in accordance with ISO 8573-1:2010, class 7:2:4 - and free of aggressive additives					
Degree of protection	IP 65 according to EN 60529					
Weight	0,506 kg (1,116 lbs.)		0,626 kg (1,380 lbs.)	0,714 kg (1,574 lbs.)		

* This models on request.

*2 Suitable plug sockets see AIRTEC Pneumatics Catalogue.

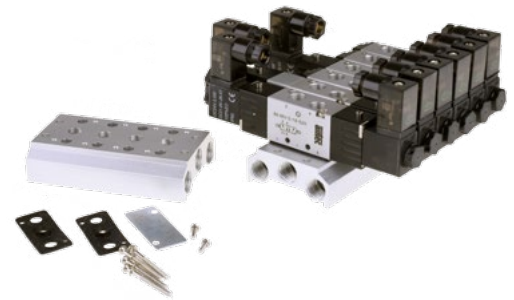
Types

86-PRS-100-xx
Manifold for series 86-MV-5-18

86-PRS-200-xx
Manifold for series 86-MV-5-28 and 86-MV-5-14

86-PRS-300-xx
Manifold for series 86-MV-5-24 and 86-MV-5-38

86-PRS-400-xx
Manifold for series 86-MV-5-12



Please complete: xx = number of valve stations

86-PRS-100: 02, 04, 06, 08, 10, 12, 14, 16

86-PRS-200: 02, 04, 05, 06, 08, 10, 12, 14, 16

86-PRS-300: 02, 04, 06

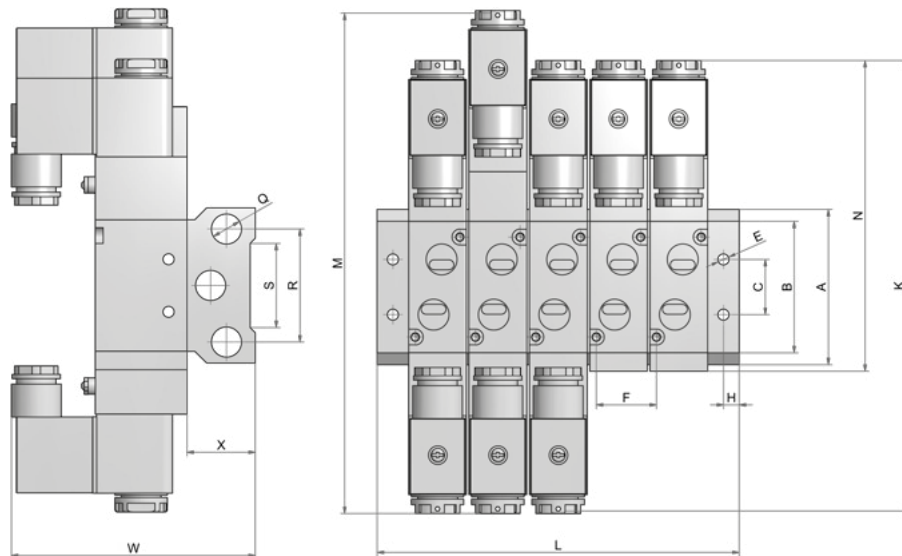
86-PRS-400: 02, 04

Design, function and technical data

Gaskets and screws are part of delivery.

For free valve stations please use the blanket plate 86-PRS-xxx-V.

86-PRS-xxx-xx



Model-no.	A	B	C	ØE	F	H	L
86-PRS-100-xx	58	43	20	4,2	19	5	(xx-1)-19+38
86-PRS-200-xx	59	50	21	4,3	23	6	(xx-1)-23+46
86-PRS-300-xx	75	64	26	4,5	28	6	(xx-1)-28+54
86-PRS-400-xx	98	94	32	5,5	35	7	(xx-1)-35+63

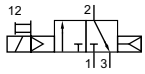
Model-no.	K	M	N	Q	R	S	W	X
86-PRS-100-xx	140	155	98	G1/4	40	30	78	25
86-PRS-200-xx	170	189	116	G1/4	43	32	92	35
86-PRS-300-xx	189	208	134	G3/8	53	48	99	40
86-PRS-400-xx	222	243	168	G1/2	68	67	112	50

Electrically operated valves

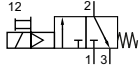
Series 86-MV-3-18



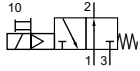
Types



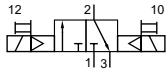
86-MV-3-18-310-xxx
3/2-way, single solenoid, NC, air spring return, G1/8



86-MV-3-18-311-xxx
3/2-way, single solenoid, NC, mechanical spring, G1/8



86-MV-3-18-311-O-xxx
3/2-way, single solenoid, NO, mechanical spring, G1/8



86-MV-3-18-320-xxx
3/2-way, double solenoid, G1/8



Please complete: xxx = voltage

M42 = 24V DC, 3 W, with plug socket with LED

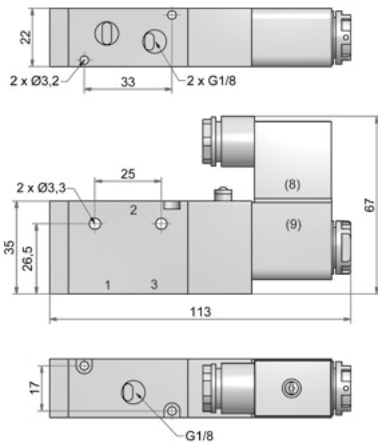
M57 = 230V AC, 3,5 VA, with plug socket with LED*

457 = 230VAC, 7/4 VA, without plug socket*²

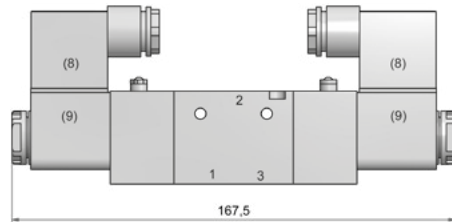
Design, function and technical data

Electrically operated spool valve. The manual override is non-detent/ detent and is operated by hand or screw driver.

86-MV-3-18-310, 86-MV-3-18-311, 86-MV-3-18-311-O



86-MV-3-18-320



1 = pressure inlet
2 = outlets
3 = exhausts

(8) = plug socket can be repositioned by 180°
(9) = solenoid coil can be repositioned by 4 x 90°

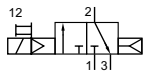
Model-no.	86-MV-3-18-310*	86-MV-3-18-311	86-MV-3-18-311-O	86-MV-3-18-320*
Connection	G1/8			
Nominal size	4 mm			
Flow rate	760 NI/min (0,772 Cv)			
Pressure range	1,5 ... 8 bar (22 ... 116 psi)			
Response time at 6 bar	20 ms			
Temperature range	+5°C ... +50°C (+41 ... +122°F)			
Materials	body: Al (anodized), steel (zinc-plated), plastic, seals: NBR, inner parts: Al, steel and plastic			
Medium	compressed air in accordance with ISO 8573-1:2010, class 7:2:4 - and free of aggressive additives			
Degree of protection	IP 65 according to EN 60529			
Weight	0,200 kg (0,441 lb.)			0,290 kg (0,639 lb.)

* This models on request.

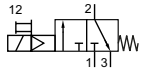
*² Suitable plug sockets see AIRTEC Pneumatics Catalogue.

Types

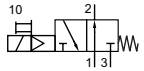
Page



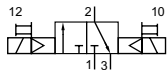
86-MV-3-14-310-xxx
3/2-way, single solenoid, NC, air spring return, G1/4



86-MV-3-14-311-xxx
3/2-way, single solenoid, NC, mechanical spring, G1/4



86-MV-3-14-311-O-xxx
3/2-way, single solenoid, NO, mechanical spring, G1/4



86-MV-3-14-320-xxx
3/2-way, double solenoid, G1/4



Please complete: xxx = voltage

M42 = 24V DC, 3 W, with plug socket with LED

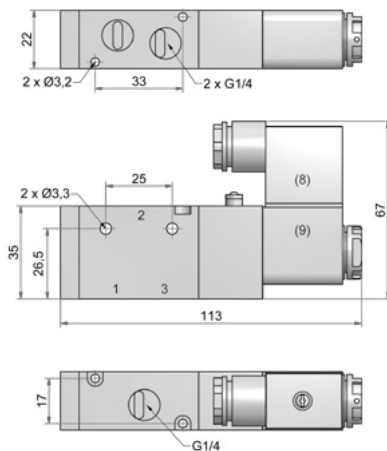
M57 = 230V AC, 3,5 VA, with plug socket with LED*

457 = 230VAC, 7/4 VA, without plug socket*²

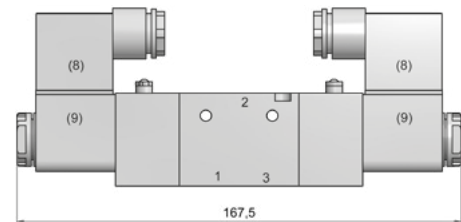
Design, function and technical data

Electrically operated spool valve. The manual override is non-detent/ detent and is operated by hand or screw driver.

86-MV-3-14-310, 86-MV-3-14-311, 86-MV-3-14-311-O



86-MV-3-14-320



1 = pressure inlet
2 = outlets
3 = exhausts

(8) = plug socket can be repositioned by 180°
(9) = solenoid coil can be repositioned by 4 x 90°

Model-no.	86-MV-3-14-310*	86-MV-3-14-311	86-MV-3-14-311-O	86-MV-3-14-320*
Connection	G1/4			
Nominal size	4,5 mm			
Flow rate	870 NI/min (0,884 Cv)			
Pressure range	1,5 ... 8 bar (22 ... 116 psi)			
Response time at 6 bar	20 ms			
Temperature range	+5°C ... +50°C (+41 ... +122°F)			
Materials	body: Al (anodized), steel (zinc-plated), plastic, seals: NBR, inner parts: Al, steel and plastic			
Medium	compressed air in accordance with ISO 8573-1:2010, class 7:2:4 - and free of aggressive additives			
Degree of protection	IP 65 according to EN 60529			
Weight	0,197 kg (0,434 lb.)			0,286 kg (0,631 lb.)

* This models on request.

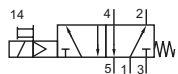
*² Suitable plug sockets see AIRTEC Pneumatics Catalogue.

Electrically operated valves

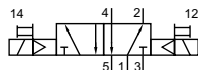
Series 86-MN-4-18, for sub base mounting



Types



86-MN-4-18-510-xxx
5/2-way, single solenoid, mechanical spring, G1/8



86-MN-4-18-520-xxx
5/2-way, double solenoid, G1/8



Please complete: xxx = voltage

M42 = 24V DC, 3 W, with plug socket with LED

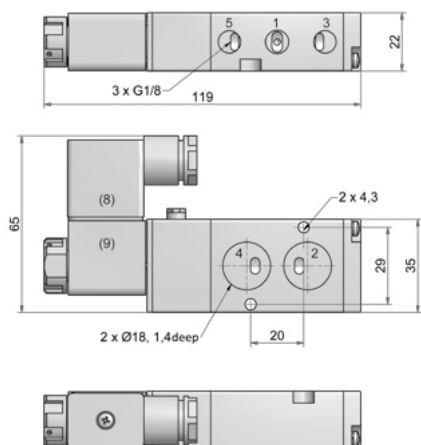
M57 = 230V AC, 3,5 VA, with plug socket with LED*

457 = 230VAC, 7/4 VA, without plug socket*²

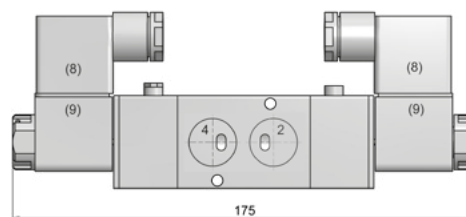
Design, function and technical data

Electrically operated spool valve. The manual override is non-detent/ detent and is operated by hand or screw driver.

86-MN-4-18-510



86-MN-4-18-520



1 = pressure inlet
2,4 = outlets
3,5 = exhausts

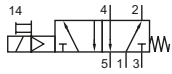
(8) = plug socket can be repositioned by 180°
(9) = solenoid coil can be repositioned by 4 x 90°

Model-no.	86-MN-4-18-510	86-MN-4-18-520
Connection	G1/8	
Nominal size	4 mm	
Flow rate	750 NI/min (0,762 Cv)	
Pressure range	1,5 ... 8 bar (22 ... 116 psi)	
Response time at 6 bar	20 ms	
Temperature range	+5°C ... +50°C (+41 ... +122°F)	
Materials	body: Al (anodized), steel (zinc-plated), plastic, seals: NBR, inner parts: Al, steel and plastic	
Medium	compressed air in accordance with ISO 8573-1:2010, class 7:2:4 - and free of aggressive additives	
Degree of protection	IP 65 according to EN 60529	
Weight	0,220 kg (0,485 lb.)	0,334 kg (0,736 lb.)

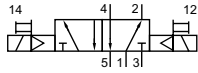
* This models on request.

*² Suitable plug sockets see AIRTEC Pneumatics Catalogue.

Types



86-MN-4-14-510-xxx
5/2-way, single solenoid, mechanical spring, G1/4



86-MN-4-14-520-xxx
5/2-way, double solenoid, G1/4



Please complete: xxx = voltage

M42 = 24V DC, 3 W, with plug socket with LED

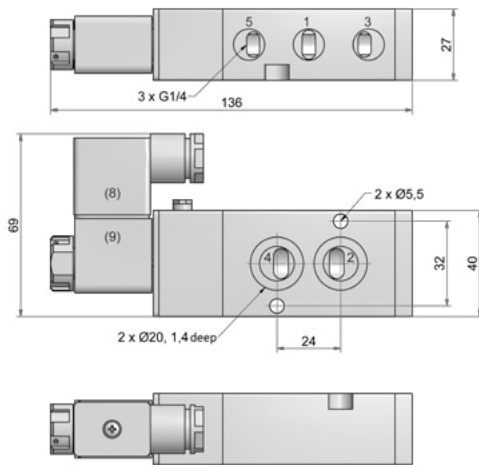
M57 = 230V AC, 3,5 VA, with plug socket with LED*

457 = 230VAC, 7/4 VA, without plug socket*²

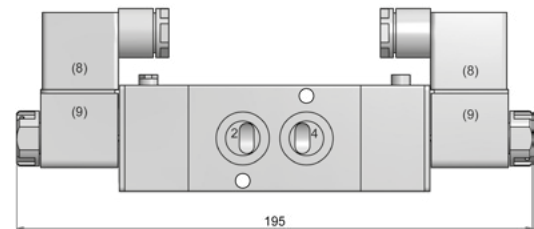
Design, function and technical data

Electrically operated spool valve. The manual override is non-detent/ detent and is operated by hand or screw driver. Ventile dieser Baureihe sind geeignet zur Montage auf according to Namur-Manifolds.

86-MN-4-14-510



86-MN-4-14-520



1 = pressure inlet
2, 4 = outlets
3, 5 = exhausts

(8) = plug socket can be repositioned by 180°
(9) = solenoid coil can be repositioned by 4 x 90°

Model-no.	86-MN-4-14-510	86-MN-4-14-520
Connection	G1/4	
Nominal size	6 mm	
Flow rate	1300 NI/min (1,321 Cv)	
Pressure range	1,5 ... 8 bar (22 ... 116 psi)	
Response time at 6 bar	20 ms	
Temperature range	+5°C ... +50°C (+41 ... +122°F)	
Materials	body: Al (anodized), steel (zinc-plated), plastic, seals: NBR, inner parts: Al, steel and plastic	
Medium	compressed air in accordance with ISO 8573-1:2010, class 7:2:4 - and free of aggressive additives	
Degree of protection	IP 65 according to EN 60529	
Weight	0,306 kg (0,674 lb.)	0,430 kg (0,948 lb.)

* This models on request.

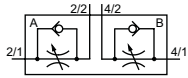
*² Suitable plug sockets see AIRTEC Pneumatics Catalogue.

Electrically operated valves

Series 86-MN-4-14, Accessories



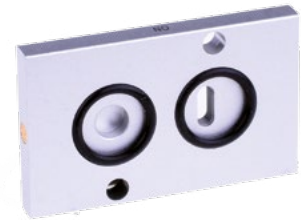
Types



86-4-DR-NAMUR
speed regulation plate, 5/2-way



86-4-AP-NAMUR
Converting plate to use a 5/2-way NAMUR valve as a 3/2-way valve

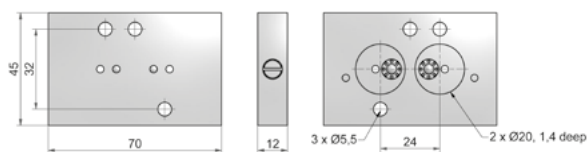


Design, function and technical data

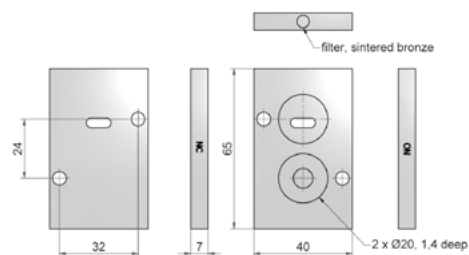
Speed regulation plate for double acting actuators. The speed regulation plate can also be used for single acting actuators by using the converting plate 86-4-AP-NAMUR. Adjustable by tool.

Converting plate suitable to obtain a 3/2-way function at a 5/2-way NAMUR valve.
Additional feature: Turning the plate by 180° you can change a NC to a NO function or vice versa.

86-4-DR-NAMUR

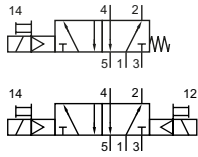


86-4-AP-NAMUR



Model-no.	86-4-DR-NAMUR	86-4-AP-NAMUR
Nominal size	4 mm	
Pressure range	1,5 ... 8 bar (22 ... 116 psi)	0 ... 8 bar (0 ... 116 psi)
Temperature range	+5°C ... +50°C (+41 ... +122°F)	
Materials	body: Al (anodized), steel (zinc-plated), plastic, seals: NBR, inner parts: Al, steel and plastic	
Medium	compressed air in accordance with ISO 8573-1:2010, class 7:2:4 - and free of aggressive additives	
Weight	0,103 kg (0,227 lb.)	0,043 kg (0,095 lb.)

Types



86-MN-4-12-510-xxx
5/2-way, single solenoid, mechanical spring, G1/2

86-MN-4-12-520-xxx
5/2-way, double solenoid, G1/2



Please complete: xxx = voltage

M42 = 24V DC, 3 W, with plug socket with LED

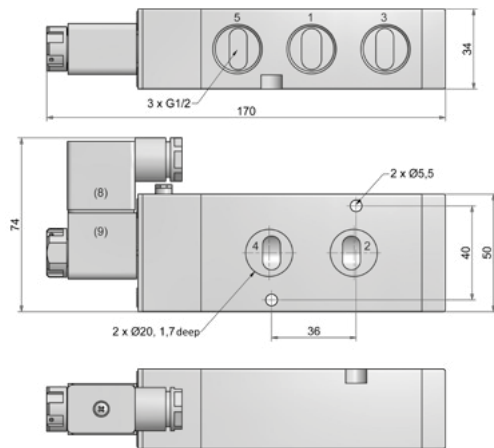
M57 = 230V AC, 3,5 VA, with plug socket with LED*

457 = 230VAC, 7/4 VA, without plug socket*²

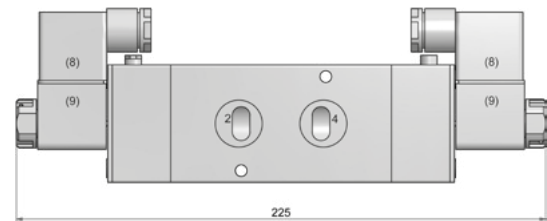
Design, function and technical data

Electrically operated spool valve. The manual override is non-detent/ detent and is operated by hand or screw driver.

86-MN-4-12-510



86-MN-4-12-520



1 = pressure inlet
2,4 = outlets
3,5 = exhausts

(8) = plug socket can be repositioned by 180°
(9) = solenoid coil can be repositioned by 4 x 90°

Model-no.	86-MN-4-12-510	86-MN-4-12-520*
Connection	G1/2	
Nominal size	8 mm	
Flow rate	2500 NI/min (2,541 Cv)	
Pressure range	1,5 ... 8 bar (22 ... 116 psi)	
Response time at 6 bar	20 ms	
Temperature range	+5°C ... +50°C (+41 ... +122°F)	
Materials	body: Al (anodized), steel (zinc-plated), plastic, seals: NBR, inner parts: Al, steel and plastic	
Medium	compressed air in accordance with ISO 8573-1:2010, class 7:2:4 - and free of aggressive additives	
Degree of protection	IP 65 according to EN 60529	
Weight	0,537 kg (1,184 lbs.)	0,658 kg (1,451 lbs.)

* This models on request.

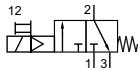
*² Suitable plug sockets see AIRTEC Pneumatics Catalogue.

Electrically operated valves

Series 86-MS-3V



Types



86-MS-3V-ss-xxx
3/2-way, single solenoid, NC, mechanical spring, G1/8

Please complete: ss = number of stations
ss = 01 to 20



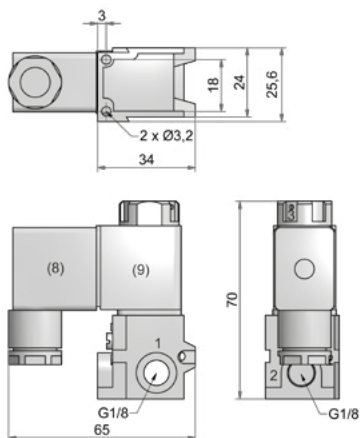
Please complete: xxx = voltage

M42 = 24V DC, 3 W, with plug socket with LED
M57 = 230V AC, 3,5 VA, with plug socket with LED*
457 = 230VAC, 7/4 VA, without plug socket*²

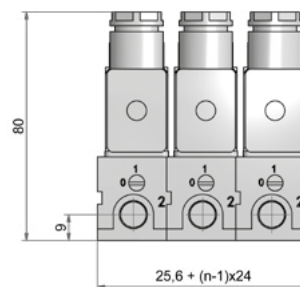
Design, function and technical data

Electrically operated poppet valve. The manual override is detent and is operated by screw driver.

86-MS-3V-01



86-MS-3V-ss



1 = pressure inlet
2 = outlets
3 = exhausts

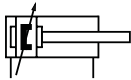
(8) = plug socket can be repositioned by 180°
(9) = solenoid coil can be repositioned by 4 x 90°

Model-no.	86-MS-3V-ss
Connection	G1/8
Nominal size	1 mm
Flow rate	50 NI/min (0,051 Cv)
Pressure range	0 ... 8 bar (0 ... 116 psi)
Response time at 6 bar	20 ms
Temperature range	-10°C ... +60°C (+14 ... +140°F)
Materials	body: Al (anodized), steel (zinc-plated), plastic, seals: NBR, inner parts: Al, steel and plastic
Medium	compressed air in accordance with ISO 8573-1:2010, class 7:2:4 - and free of aggressive additives
Degree of protection	IP 65 according to EN 60529
Weight	0,176 kg (0,388 lb.)

* This models on request.

*² Suitable plug sockets see AIRTEC Pneumatics Catalogue.

Types



88-XSI
double acting, adjustable cushions and permanent magnet for proximity sensors



Order code

88-XSI-***-****-***	
Series	Version
Piston-Ø (mm)	standard, (steel piston rod, chromium plated) 050
32 032	Stroke (mm)
40 040	max. 1000 at Ø32
50 050	max. 1200 at Ø40, Ø50, Ø63
63 063	max. 1500 at Ø80, Ø100, Ø125
80 080	
100 100	
125 125	

Design, function and technical data

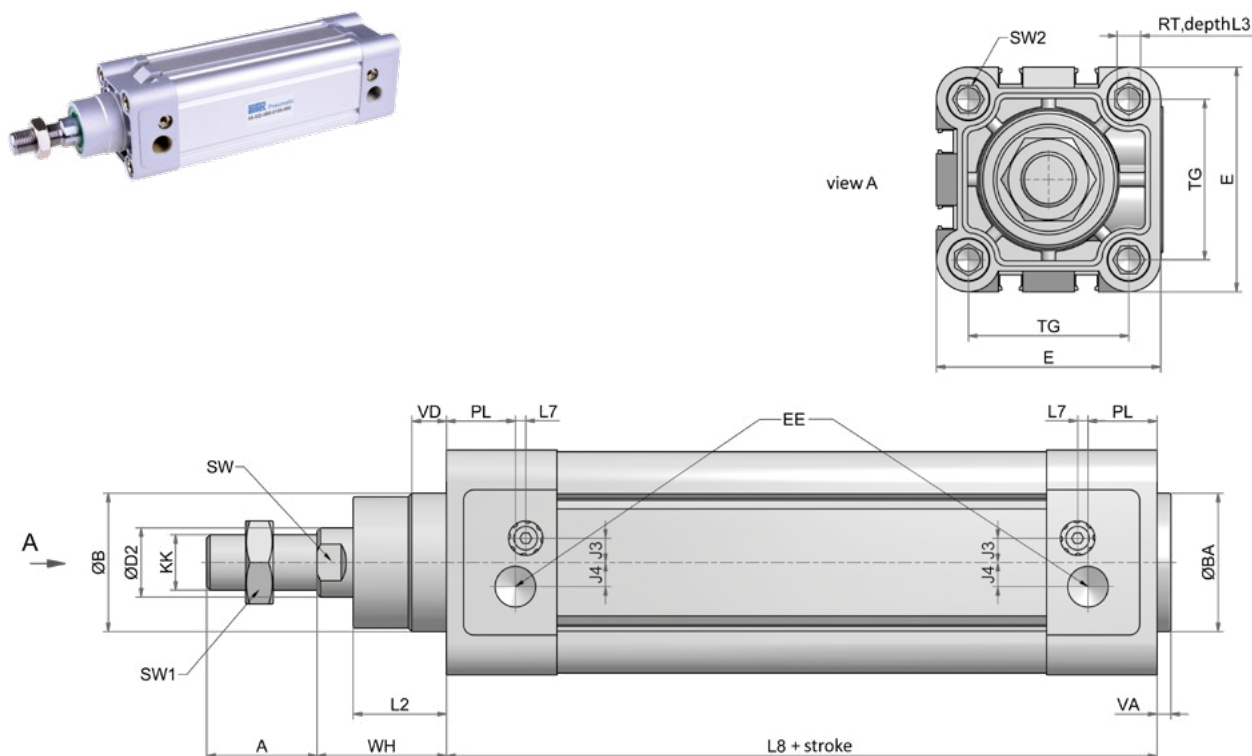
Double acting Al-profile cylinder with integrated sensor grooves, adjustable cushions and permanent magnet for proximity sensors. The sensors can be installed directly into the sensor grooves of the Al-profile. Standard stroke lengths in table below, additional lengths on request.

Model-no.	88-XSI-032-...	88-XSI-040-...	88-XSI-050-...	88-XSI-063-...	88-XSI-080-...	88-XSI-100-...	88-XSI-125-...
Piston-Ø (mm)	32	40	50	63	80	100	125
Force at Extension	434	678	1060	1682	2713	4239	6623
6 bar (N) Retraction	373	570	890	1513	2448	3974	6189
Connection	G1/8	G1/4	G1/4	G3/8	G3/8	G1/2	G1/2
Piston rod thread	M10x1,25	M12x1,25	M16x1,5	M16x1,5	M20x1,5	M20x1,5	M27x2
Cushioning length (mm)	20	20	20	20	26	26	26
Pressure range	1 ... 10 bar (14 ... 145 psi)						
Temperature range	-20°C ... +80°C (-4°F ... +176°F)						
Medium	compressed air in accordance with ISO 8573-1:2010, class 7:2:4 – and and free of aggressive additives						
Standard stroke lengths (mm)	25, 40, 50, 80, 100, 125, 160, 200, 250, 320, 400, max. 1000						
Materials	cylinder tube: Al-profile (anodized) end caps: aluminium-die-cast (varnished) piston rod: steel, hard chrome plated seals: PU, NBR						

Profile cylinder, double acting

ISO 15552

Dimensions



Piston-Ø	A	Ø B	Ø BA	Ø D2	E	EE	J3	J4	KK	L2	L3
32	22	30	30	12	45	G1/8	6,5	5	M10x1,25	16	12
40	24	35	35	16	52	G1/4	7	7	M12x1,25	20	12
50	32	40	40	20	65	G1/4	9	7	M16x1,5	27	12
63	32	45	45	20	76	G3/8	9	8	M16x1,5	26	12
80	40	45	45	25	94	G3/8	12	10	M20x1,5	35	15
100	40	55	55	25	112	G1/2	14	10	M20x1,5	40	15
125	54	60	60	32	134	G1/2	14	10	M27x2	46	20

Piston-Ø	L7	L8	PL	RT	SW	SW1	SW2	TG	VA	VD	WH
32	3	94	15	M6	10	17	6	32,5	4	10	26
40	3	105	17,5	M6	13	19	6	38	4	10	30
50	3	106	20	M8	17	24	8	46,5	4	10	37,5
63	5	122	22	M8	17	24	8	56,5	4	10	36
80	5	127	23	M10	22	30	6	72	5	10	48
100	5	137	26	M10	22	30	6	89	6	10	52
125	5	160	29	M12	27	41	8	110	7	10	63

AIRTEC Pneumatic GmbH

Westerbachstraße 7
61476 Kronberg
Germany

Tel. +49 6173 95 62 0
Fax +49 6173 95 62 49

info@airtec.de
airtec.de