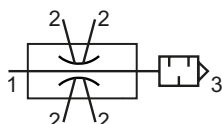


Technical details

Temperature range	0°C ... +60°C
Medium	Filtered, oil-free and dried compressed air according to ISO 8573-1:2010, Class 7:2:4, instrument air, free of aggressive additives. Alternatively the pressure dew point must be at least 10°C below lowest occurring ambient temperature.
Materials	Body: Al (anodized), silencer: plastic



The MI series is based on the Venturi principle. The unit is available with 4, 6 or 8 vacuum ports. The vacuum is maintained on all ports, even in cases where one or several cups draw atmospheric pressure. The granulate silencer is part of delivery. The MIF series is developed for high flow rates.



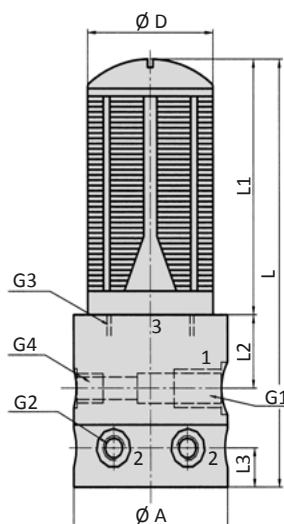
Technical data

Model-no.:	MIF-4/25	MIF-4/60	MIF-4/80	MIF-6/40	MIF-6/55	MIF-8/30	MIF-8/40
Max. vacuum level (%)	70	73	70	73	67	70	70
Number of vacuum ports	4	4	4	6	6	8	8
Flow rate (l/min)**	8	16	25	9	17	11	16
Air consumption (l/min)*	112 (4x28)	240 (4x60)	376 (4x94)	240 (6x40)	366 (6x61)	240 (8x30)	400 (8x50)
Time to evacuate (s/l)**	1.1	0.6	0.4	0.8	0.6	0.8	0.6
Operating pressure (bar)	4.5 ... 6	4.5 ... 6	4.5 ... 6	4.5 ... 6	4.5 ... 6	4.5 ... 6	4.5 ... 6
Weight (kg)	0.240	0.370	0.370	0.370	0.370	0.370	0.370

* at 5 bar operating pressure

** at 40% vacuum level and 5 bar operating pressure

Dimensions



- 1 = pressure inlet
- 2 = vacuum inlet
- 3 = exhaust

Model-no.:	Ø A	Ø D	G1	G2	G3	G4	L	L1	L2	L3
MIF-4/25	48	24.5	G1/4	G1/8	G1/2	G1/8	109	47	25	15
MIF-4/60	59	48	G1/4	G1/8	G1	G1/8	163	97	28	15
MIF-4/80	59	48	G1/4	G1/8	G1	G1/8	163	97	28	15
MIF-6/40	59	48	G1/4	G1/8	G1	G1/8	163	97	28	15
MIF-6/55	59	48	G1/4	G1/8	G1	G1/8	163	97	28	15
MIF-8/30	59	48	G1/4	G1/8	G1	G1/8	163	97	28	15
MIF-8/40	59	48	G1/4	G1/8	G1	G1/8	163	97	28	15